

Installation Instructions

ENOLT LL-Series Twin and Single Luminaires

THANK YOU FOR PURCHASING THIS QUALITY ENOLT PRODUCT. TO ENSURE CORRECT FUNCTION AND SAFETY, PLEASE READ ALL INSTRUCTIONS CAREFULLY BEFORE USING.

This luminaire complies with AS/NZS 60598.1.2013.

Rated Voltage 230V, 50Hz

Operating Temperature: 0 to +40°C (-30 to +40°C Sub-Zero model)

IMPORTANT: *This luminaire is designed for fixed mounting only, and is NOT suitable for portable use.*

WARRANTY:

This luminaire is covered by a 5 year limited product warranty. Please retain proof of purchase.

Refer to website (WWW.ENOLT.CO.NZ) for full warranty policy.

SAFETY:

- No user serviceable parts inside. There is a danger of electrocution if the luminaire is disassembled or modified.
- Do not stare directly into the light. This luminaire uses high intensity LEDs which are very bright and could cause harm.
- Check that all parts have been supplied in the mounting kit before installing luminaire. Ensure fixing points in roof or ceiling are secure before hanging or mounting luminaire.
- Use only supplied mounting kit, and fit only as specified in these instructions.
- For flex only connection, installation must be in accordance with the current wiring regulations AS/NZ3000, **and should only be performed by a suitably qualified person.**
- If the external flexible cable or cord of this luminaire is damaged, it shall be exclusively replaced by the manufacturer or his service agent, or a similar qualified person in order to avoid a hazard.
- Do not cut the suspension length adjust cable or remove the ball end stop.
- Ensure wire locking grub screw is firmly tightened into shaft of the cable length adjuster.



RIGHT



WRONG

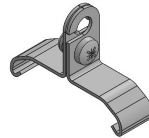
MAINTENANCE:

- Always ensure luminaire is off and cooled down before performing any maintenance.
- Keeping the luminaire free from dust build-up will help prolong luminaire life and maintain lumen output.
- To clean the lens, wipe with a clean damp cloth. Never soak the luminaire with liquid. Only use water based cleaner.
- Ensure luminaire and its mounting hardware does not come in contact with corrosive chemicals.

INSTALLATION

(1) SINGLE LUMINAIRE (LL1500S)

Hanging Kit Single Luminaire



2 x Single wire suspension cables, 2 x hanging clamps

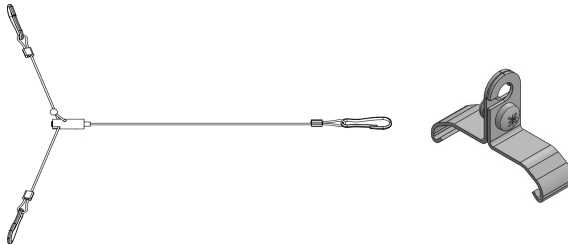
- Attach spring clip to fixing points in roof or ceiling, and clip the adjustable ferrule to the hanging clamp on the luminaire. There is one cable set for each end of the luminaire. Ensure cables hang vertically and not at an angle.
- Pull the ball end of the cable to adjust height.
- Coil the excess cable and cable tie to main cable.
- Mains connection may be via the 3 pin plug supplied, or the mains flex may be shortened and wired directly by a suitably qualified person.



Single Luminaire with hanging kit installed

(2) TWIN LUMINAIRE (LL1500T)

Hanging Kit Twin Luminaire



2 x Twin wire suspension cable, 4 x hanging clamps

- Attach spring clip to fixing points in roof or ceiling, and clip the double cables to the twin hanging clamps on the luminaire. There is one cable set for each end of the luminaire. Ensure cables hang vertically and not at an angle.
- Pull the ball end of the cable to adjust height. Ensure the luminaire is level then tighten the locking grub screw on the cable length adjusters.
- Coil the excess cable and cable tie to main cable.
- Mains connection may be via the 3 pin plug supplied, or the mains flex may be shortened and wired directly by a suitably qualified person.



Cable length adjuster



Recommended excess cable management



Twin Luminaire with hanging kit installed

(3) SURFACE MOUNTED TWIN LUMINAIRE (LL1500TSM, LL1500TSZ)

For applications where the luminaire must be attached directly to the surface of the roof or ceiling, for example in sheds where circulating airflow can cause hanging lights to swing.

Mounting Kit Twin Luminaire



3x Surface Mount Brackets
3x 40mm Stainless Steel Screws

Mounting plate on luminaire

- The mounting plates are fitted between the two extrusions on the Twin Surface Mount Luminaire, and are movable for location of the mounting points.
- Locate the centre mounting screw on the roof or ceiling surface, and screw in to about 80% depth.
- Locate the luminaire so that the keyhole in the centre mounting plate fits over the screw and is captured. Ensure correct positioning of the luminaire, then tighten the centre screw.
- Position the other two mounting plates in the desired location, and drill and fit the screws through the hole in the mounting plates for firm retention of the luminaire.
- Mains connection may be via the 3 pin plug supplied, or the mains flex may be shortened and wired directly by a suitably qualified person.

USE IN CORROSIVE ENVIRONMENTS

Enolt luminaires are water and dust resistant in accordance with IP65 standards. However, they should not be used in conditions exceeding their IP rating or in corrosive atmospheres.